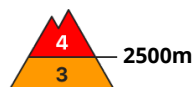
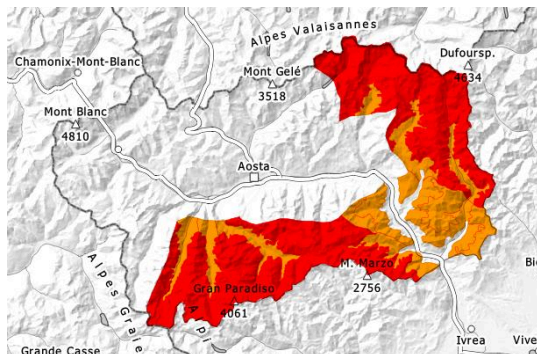




Danger Level 4 - High



Tendency: Decreasing avalanche danger



New snow



Wet snow



In high Alpine regions a lot of snow is lying. At elevated altitudes a high avalanche danger will persist.

As a consequence of solar radiation numerous moist loose snow avalanches are possible, in particular medium-sized ones, especially on very steep slopes, and at the base of rock walls. As the moisture increases more wet avalanches are possible.

As a consequence of new snow and a sometimes moderate northwesterly wind, deep wind slabs will form especially at elevated altitudes, in particular adjacent to ridgelines and in gullies and bowls. Several medium-sized and, in isolated cases, large slab avalanches are possible especially on very steep slopes.

Meticulous route selection is recommended. The fresh snow and the wind slabs can be released easily, even by a single winter sport participant, above approximately 2200 m. In particular at elevated altitudes the prevalence and size of the avalanche prone locations will increase.

Snowpack

30 to 70 cm of snow, and even more in some localities, has fallen since Wednesday above approximately 2300 m. Up to 2100 m rain has fallen since Wednesday. The southeasterly wind has transported the new snow.

The old snowpack is well consolidated. New snow and wind slabs are lying on a hard crust.

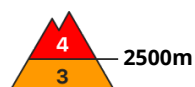
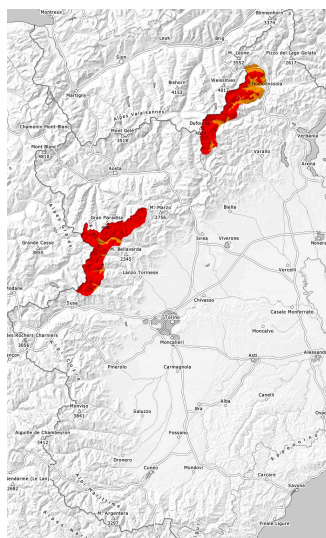
The weather conditions gave rise to moistening of the snowpack also at intermediate and high altitudes. In particular at intermediate and high altitudes there is still a very large amount of snow. Below approximately 2000 m hardly any snow is lying.

Tendency

Gradual decrease in avalanche danger as the precipitation eases.



Danger Level 4 - High



Tendency: Decreasing avalanche danger
on Saturday 04 05 2024



New snow



Wet snow



In high Alpine regions a lot of snow is lying. At elevated altitudes a high avalanche danger will persist.

Above approximately 2500 m a lot of snow is lying. As a consequence of warming during the day numerous moist loose snow avalanches are possible, even large ones. In some places these can release the moist old snow as well and can reach as far as low altitudes. The avalanches can in very isolated cases reach very large size. As a consequence of new snow and a sometimes moderate northwesterly wind, avalanche prone wind slabs will form at elevated altitudes. The fresh snow and the wind slabs can be released easily, even by a single winter sport participant,. This applies in particular at high altitudes and in high Alpine regions.

The conditions are very dangerous for backcountry touring and snowshoe hiking.

Snowpack

Danger patterns

dp.6: cold, loose snow and wind

dp.3: rain

Over a wide area 50 to 80 cm of snow, and even more in some localities, has fallen since Tuesday above approximately 2500 m.

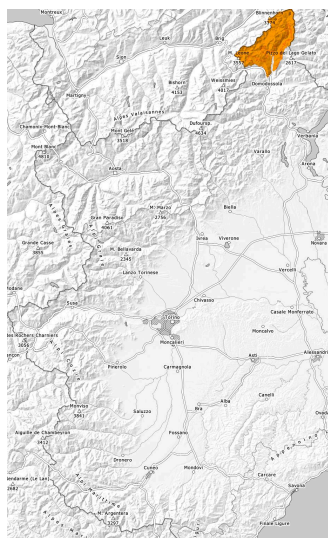
The wind slabs have bonded poorly with the old snowpack. Intensive rain to intermediate altitudes: The weather conditions gave rise to significant moistening of the snowpack.

Tendency

Decrease in avalanche danger as the precipitation eases.



Danger Level 3 - Considerable



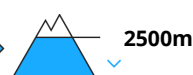
Tendency: Constant avalanche danger
on Saturday 04 05 2024



New snow



Wet snow



New snow and wet snow represent the main danger.

Above approximately 2500 m a lot of snow is lying. As a consequence of warming during the day numerous moist loose snow avalanches are possible, in particular medium-sized ones. As a consequence of new snow and a sometimes moderate northwesterly wind, avalanche prone wind slabs will form at elevated altitudes. The fresh snow and the wind slabs can be released easily, even by a single winter sport participant,. This applies in particular at high altitudes and in high Alpine regions. Backcountry touring calls for experience in the assessment of avalanche danger and careful route selection.

Snowpack

Danger patterns

dp.6: cold, loose snow and wind

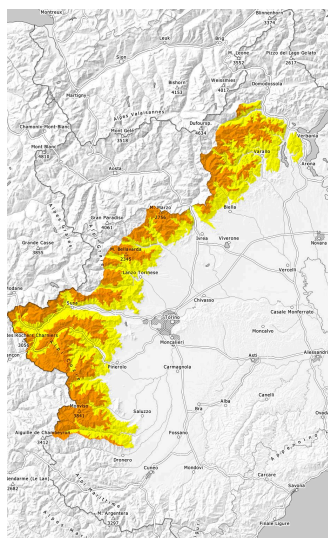
dp.3: rain

Over a wide area 15 to 30 cm of snow has fallen since Tuesday above approximately 2500 m. In some cases the wind slabs have bonded poorly with the old snowpack.

Intensive rain to intermediate altitudes: The weather conditions gave rise to significant moistening of the snowpack.



Danger Level 3 - Considerable



Tendency: Decreasing avalanche danger
on Saturday 04 05 2024



New snow



Wet snow



In high Alpine regions a lot of snow is lying. At elevated altitudes a high avalanche danger will be encountered in some localities.

In the regions exposed to heavier precipitation above approximately 2700 m in some localities danger level 4 (high) will be reached. As a consequence of warming during the day numerous moist loose snow avalanches are possible, even large ones in isolated cases. As a consequence of new snow and a sometimes moderate northwesterly wind, avalanche prone wind slabs will form at elevated altitudes. The fresh snow and the wind slabs can be released easily, even by a single winter sport participant,. This applies in particular at high altitudes and in high Alpine regions.

The conditions are dangerous for backcountry touring and snowshoe hiking, especially on very steep slopes, and at the base of rock walls.

Snowpack

Danger patterns

dp.6: cold, loose snow and wind

dp.3: rain

40 to 70 cm of snow has fallen since Tuesday above approximately 2500 m.

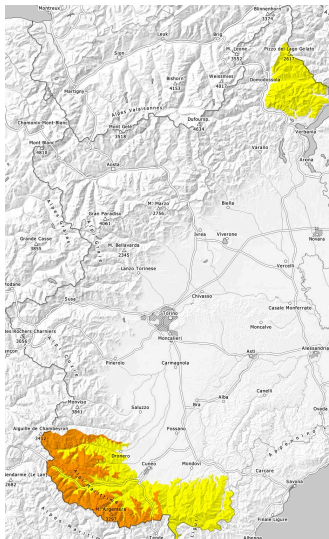
In some cases the wind slabs have bonded poorly with the old snowpack. The weather conditions gave rise to significant moistening of the snowpack.

Tendency

Decrease in avalanche danger as the precipitation eases.



Danger Level 3 - Considerable



Tendency: Constant avalanche danger
on Saturday 04 05 2024 →



New snow



2300m



Wet snow



2300m

New snow and wet snow represent the main danger.

Medium-sized moist and wet avalanches are possible. The fresh snow and the sometimes large wind slabs can be released by a single winter sport participant, in particular at high altitudes and in high Alpine regions.

Snowpack

Danger patterns

dp.3: rain

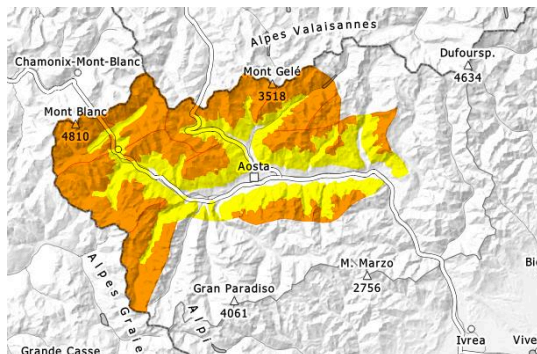
dp.6: cold, loose snow and wind

Over a wide area 20 to 30 cm of snow, but less in some localities, has fallen since Tuesday above approximately 2500 m.

In some cases the wind slabs have bonded poorly with the old snowpack. Intensive rain to intermediate altitudes:



Danger Level 3 - Considerable



Tendency: Decreasing avalanche danger



New snow



Wet snow



New snow and wet snow represent the main danger.

As a consequence of solar radiation numerous moist loose snow avalanches are possible, but they will be mostly small, especially on very steep slopes, and at the base of rock walls. As the moisture increases more wet avalanches are possible.

As a consequence of new snow and a sometimes moderate northwesterly wind, sometimes deep wind slabs will form especially at elevated altitudes, in particular adjacent to ridgelines and in gullies and bowls. Several small and medium-sized slab avalanches are possible especially on very steep slopes.

The fresh snow and the wind slabs can be released easily, even by a single winter sport participant, above approximately 2200 m. In particular at elevated altitudes the prevalence and size of the avalanche prone locations will increase.

Snowpack

Over a wide area 20 to 30 cm of snow has fallen since Wednesday above approximately 2500 m. Up to 2300 m rain fell on Wednesday.

The southeasterly wind has transported the new snow.

The old snowpack is well consolidated. New snow and wind slabs are lying on a hard crust.

The weather conditions gave rise to moistening of the snowpack also at intermediate and high altitudes. In particular here there is still a very large amount of snow.

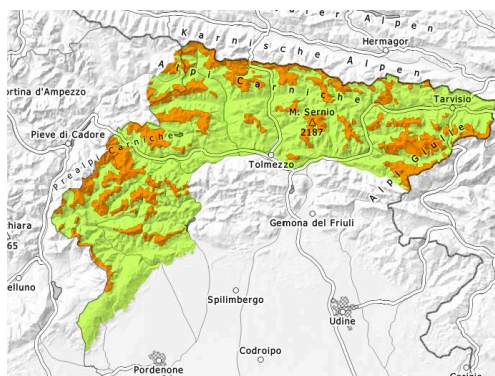
Below approximately 2000 m hardly any snow is lying.

Tendency

The danger of moist loose snow avalanches will decrease during the day.



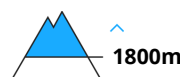
Danger Level 3 - Considerable



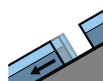
Tendency: Constant avalanche danger



New snow



Wet snow



Gliding snow



As a consequence of the precipitation the prevalence and size of the avalanche prone locations will increase.

In all aspects loose snow avalanches are possible. Gliding avalanches are also to be expected.

The avalanche prone locations are to be found in particular on steep slopes and adjacent to ridgelines and in gullies and bowls. In particular in the regions exposed to heavier precipitation large and, in isolated cases, very large avalanches are possible.

Avalanches can be released by small loads.

The conditions are unfavourable for backcountry touring.

Snowpack

Some snow will fall over a wide area.

The weather conditions will give rise to thorough wetting of the snowpack over a wide area.

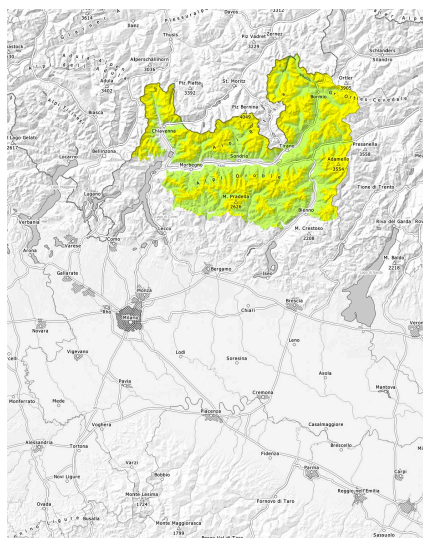
Weak layers exist in the snowpack.

Tendency

Light precipitation.



Danger Level 2 - Moderate



Treeline

Tendency: Constant avalanche danger
on Saturday 04 05 2024



Wind-drifted
snow



Treeline



Wet snow



Treeline

The sometimes deep wind slabs of the last few days can be released by a single winter sport participant in isolated cases in particular on wind-protected shady slopes above approximately 2500 m.

Some fresh snow and the sometimes deep wind slabs represent the main danger.

Snowpack

Danger patterns

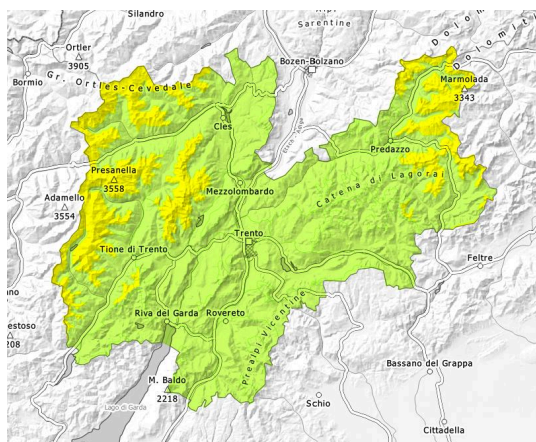
dp.6: cold, loose snow and wind

dp.10: springtime scenario

In particular adjacent to ridgelines as well as at high altitudes and in high Alpine regions sometimes avalanche prone wind slabs formed.



Danger Level 2 - Moderate



Tendency: Constant avalanche danger →



Wind-drifted snow



Wet snow



Increase in avalanche danger as a consequence of the precipitation.

The new snow and wind slabs of the last few days must be evaluated with care and prudence in all aspects above approximately 2500 m. Dry avalanches can reach medium size in particular in the regions exposed to heavier precipitation, especially on wind-loaded slopes. These can in some places be released by small loads. The avalanche prone locations are to be found in particular on steep slopes above approximately 2500 m.

As a consequence of the rain wet and gliding avalanches are possible as the day progresses, especially on steep slopes below approximately 2500 m in all aspects.

Snowpack

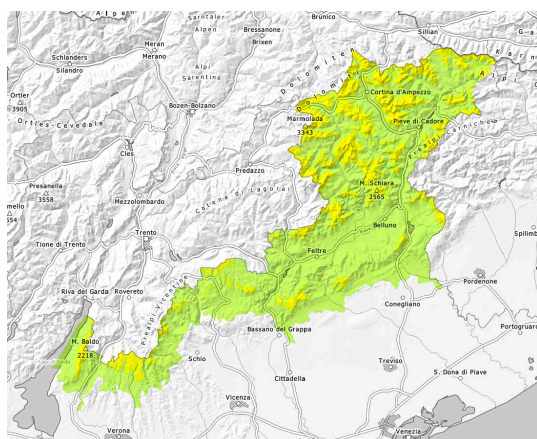
In some regions up to 30 cm of snow, and even more in some localities, has fallen above approximately 2500 m. As a consequence of new snow and a sometimes strong wind, sometimes avalanche prone wind slabs formed in particular in the vicinity of peaks. The rain gave rise to increasing and thorough wetting of the snowpack below approximately 2300 m.

Tendency

The avalanche danger will increase but remain within the current danger level. Fresh wind slabs represent the main danger. As a consequence of warming loose snow avalanches are to be expected, even medium-sized ones, especially in steep rocky terrain in all aspects below approximately 2500 m.



Danger Level 2 - Moderate



Treeline

Tendency: Increasing avalanche danger



Wet snow



Treeline



Wind-drifted snow



Treeline

Up to 1800 m rain will fall until Friday. A lot of new snow at high altitude.

As a consequence of the precipitation more dry and moist avalanches are possible, but they can be large, especially on very steep slopes, and at the base of rock walls and at high altitude, in the regions exposed to heavier precipitation in particular. In the typical avalanche paths here the avalanches can in isolated cases reach the bare valleys.

As the snowfall level drops only isolated ground avalanches are possible.

The conditions are critical for backcountry touring. The fresh snow and the wind slabs can be released easily, even by a single winter sport participant, above approximately 1900 m. At high altitude the avalanche prone locations are more prevalent.

Snowpack

Danger patterns

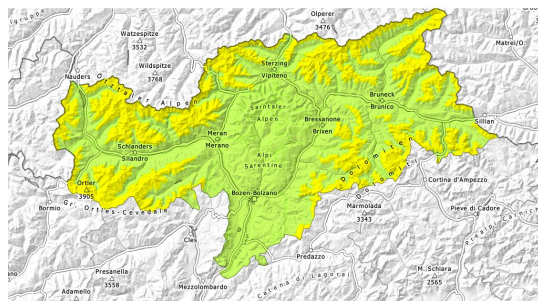
dp.3: rain

In some regions 10 to 30 cm of snow has fallen since Wednesday above approximately 2500 m. The northeasterly wind has transported some snow.

The wind slabs have bonded poorly with the old snowpack. Intensive rain to intermediate altitudes: The weather conditions gave rise to significant moistening of the snowpack.



Danger Level 2 - Moderate



Tendency: Constant avalanche danger



Wind-drifted snow



Fresh wind slabs are to be evaluated with care and prudence.

High altitudes and the high Alpine regions: The fresh wind slabs are in isolated cases prone to triggering on west to north to east facing aspects. Avalanches can reach medium size in particular in the regions exposed to heavier precipitation.

Only isolated wet and gliding avalanches are possible. In very isolated cases avalanches can release the saturated snowpack and reach a dangerous size.

The Avalanche Warning Service currently has only a small amount of information that has been collected in the field, so that the avalanche danger should be investigated especially thoroughly in the relevant locality.

Snowpack

Danger patterns

dp.6: cold, loose snow and wind

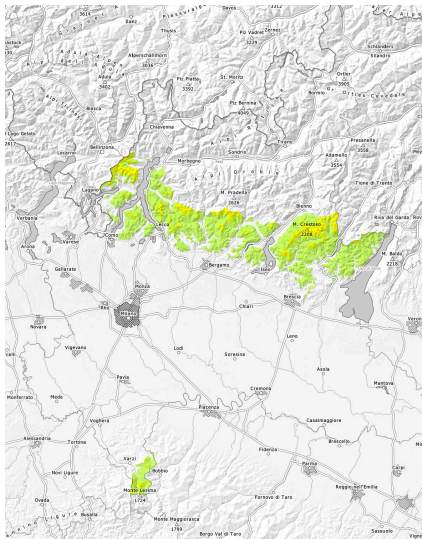
High altitudes and the high Alpine regions: Some snow will fall in some localities. In some localities up to 15 cm of snow, and even more in some localities, has fallen. As a consequence of a sometimes strong wind from variable directions, wind slabs will form in particular in gullies and bowls and behind abrupt changes in the terrain.

Tendency

Fresh wind slabs require caution. Regions exposed to heavier precipitation: As a consequence of warming during the day and solar radiation more frequent loose snow avalanches are to be expected as the day progresses, even medium-sized ones, especially in steep rocky terrain in all aspects.



Danger Level 2 - Moderate



Tendency: Constant avalanche danger
on Saturday 04 05 2024 →



Wet snow



Treeline

Some fresh snow and the mostly small wind slabs can be released by a single winter sport participant in particular on north to northeast to northwest facing aspects. As a consequence of the rain small and medium-sized natural wet avalanches are possible in all altitude zones.

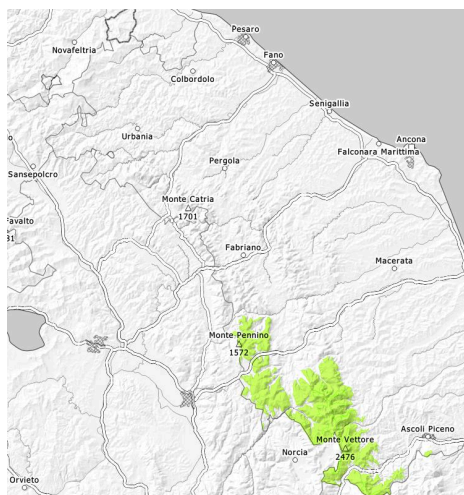
Snowpack

Danger patterns

dp.3: rain



Danger Level 1 - Low



Tendency: Constant avalanche danger
on Saturday 04 05 2024



Wet snow



1900m

Wet snow represents the main danger.

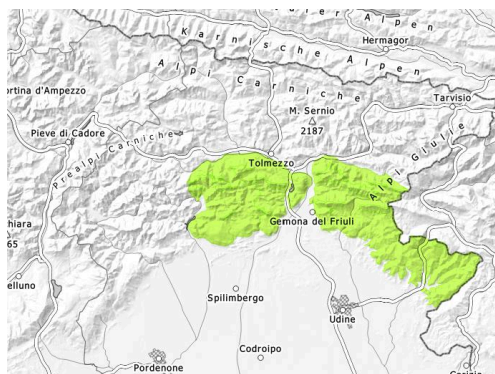
Individual moist and wet avalanches are possible, but they will be mostly small. The avalanches can occur naturally as well. The avalanche prone locations are to be found especially in extremely steep terrain at high altitude.

Snowpack

At intermediate altitudes hardly any snow is lying. At high altitude only a little snow is lying. The snowpack will be subject to considerable local variations. A little new snow above approximately 1800 m.



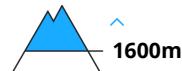
Danger Level 1 - Low



Tendency: Constant avalanche danger →
on Saturday 04 05 2024



Wet snow



Over a wide area rain.

As a consequence of the precipitation the prevalence and size of the avalanche prone locations will increase.

As a consequence of the rain individual small and, in isolated cases, medium-sized moist and wet avalanches are possible. As a consequence of the rain, the likelihood of moist and wet avalanches being released will increase in particular on steep shady slopes.

Snowpack

The rain will give rise to thorough wetting of the old snowpack on shady slopes.
On sunny slopes hardly any snow is lying.

Tendency

Light precipitation.

