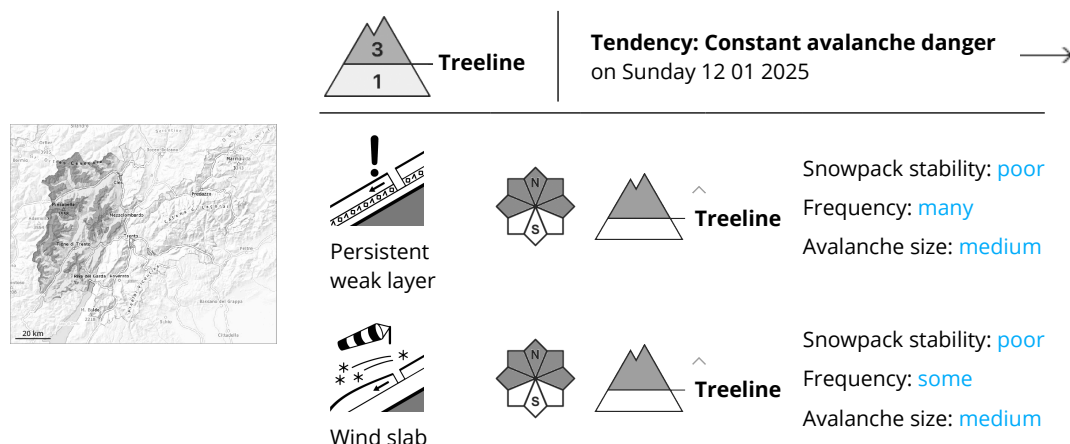


Danger Level 3 - Considerable



Weakly bonded old snow represents the main danger. Fresh wind slabs require caution.

Avalanches can be released in the weakly bonded old snow. These avalanche prone locations are to be found especially on steep west, north and east facing slopes above the tree line, caution is to be exercised in particular in areas where the snow cover is rather shallow, as well as at transitions from a shallow to a deep snowpack. In particular in regions exposed to heavier precipitation the avalanche prone locations are more widespread and the danger is greater. Whumpfung sounds and the formation of shooting cracks when stepping on the snowpack can indicate the danger. Avalanches can reach medium size.

The older wind slabs can be released by a single winter sport participant in particular on west to north to east facing aspects. Avalanches can reach medium size in particular on shady slopes. The fresh wind slabs can be released by a single winter sport participant in isolated cases also on steep sunny slopes. At high altitude and in the regions exposed to heavier precipitation the avalanche prone locations are more prevalent.

Snowpack

Danger patterns

dp.7: snow-poor zones in snow-rich surrounding

dp.6: cold, loose snow and wind

Some snow will fall in the evening in particular in the west. As a consequence of a strong wind from northerly directions, sometimes avalanche prone wind slabs will form in particular in gullies and bowls and behind abrupt changes in the terrain. The older wind slabs will be deposited on soft layers in particular on steep northwest, north and east facing slopes.

Precarious weak layers exist deep in the old snowpack especially on shady slopes.

Tendency

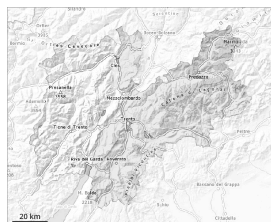
Wind slabs and weakly bonded old snow are to be critically assessed. Until Monday the weather will be



cold. These weather conditions will prevent a rapid stabilisation of the snow drift accumulations.



Danger Level 2 - Moderate



Treeline

Tendency: Constant avalanche danger →
on Sunday 12 01 2025



Wind slab



Treeline

Snowpack stability: **poor**

Frequency: **some**

Avalanche size: **small**

Fresh wind slabs require caution. Only a small amount of snow is lying for the time of year.

Avalanches can be released by a single winter sport participant, in particular on very steep shady slopes at elevated altitudes. Individual avalanche prone locations are to be found in particular in gullies and bowls, and behind abrupt changes in the terrain.

Mostly avalanches are rather small. Apart from the danger of being buried, restraint should be exercised as well in view of the danger of avalanches sweeping people along and giving rise to falls.

In the regions neighbouring those that are subject to danger level 3 (considerable) the avalanche danger is a little higher.

Snowpack

Danger patterns

dp.6: cold, loose snow and wind

As a consequence of a strong wind from northerly directions, sometimes avalanche prone wind slabs will form in particular in gullies and bowls and behind abrupt changes in the terrain. The older wind slabs will be deposited on soft layers in particular on steep northwest, north and east facing slopes.

Individual weak layers exist deep in the old snowpack especially on shady slopes.

The snowpack will be subject to considerable local variations over a wide area. Only a little snow is lying.

Tendency

Wind slabs require caution. Until Monday the weather will be cold. These weather conditions will prevent a rapid stabilisation of the snow drift accumulations.

