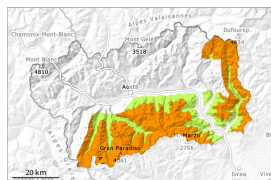


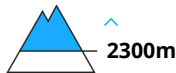
Danger Level 3 - Considerable



Tendency: Constant avalanche danger
on Wednesday 12 03 2025 →



Wind slab



Snowpack stability: **very poor**

Frequency: **some**

Avalanche size: **medium**

Fresh wind slabs represent the main danger.

As a consequence of new snow and a moderate to strong southeasterly wind, easily released wind slabs formed by Monday. Artificially triggered avalanches and avalanches triggered by explosives confirm a sometimes treacherous avalanche situation on very steep shady slopes. Whumpfung sounds and shooting cracks when stepping on the snowpack indicate the existence of a weak snowpack. The avalanche prone locations are to be found between approximately 2300 and 2800 m.

The fresh snow and the wind slabs can be released easily, even by a single winter sport participant,.

Backcountry touring and other off-piste activities call for defensive route selection.

Several mostly small avalanches are possible as the day progresses. In the event of prolonged bright spells this applies in particular on rocky sunny slopes.

Snowpack

20 to 30 cm of snow has fallen since Sunday above approximately 2000 m. The wind was moderate to strong in some localities.

The new snow and wind slabs are lying on a crust on steep sunny slopes.

In shady places that are protected from the wind: Towards its surface, the snowpack is dry and has a loosely bonded surface. The new snow and wind slabs are lying on the unfavourable surface of an old snowpack on steep shady slopes above approximately 2300 m.

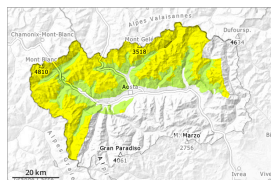
In all aspects less snow than usual is lying. On sunny slopes below approximately 2600 m hardly any snow is lying.

Tendency

The weather conditions will give rise to increasing consolidation of the snowpack.



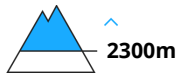
Danger Level 2 - Moderate



Tendency: Constant avalanche danger
on Wednesday 12 03 2025 →



Wind slab



Snowpack stability: **poor**

Frequency: **some**

Avalanche size: **medium**

Fresh wind slabs represent the main danger.

As a consequence of new snow and a moderate to strong southeasterly wind, sometimes avalanche prone wind slabs formed by Monday. Reports filed by observers confirm a sometimes treacherous avalanche situation on very steep shady slopes. Whumpfung sounds and shooting cracks when stepping on the snowpack indicate the existence of a weak snowpack. The avalanche prone locations are to be found between approximately 2300 and 2800 m.

The fresh snow and the wind slabs can be released by a single winter sport participant. Backcountry touring and other off-piste activities call for meticulous route selection.

Several small avalanches are possible as the day progresses. In the event of prolonged bright spells this applies in particular on rocky sunny slopes.

Snowpack

10 to 15 cm of snow has fallen since Sunday above approximately 2000 m. The wind was moderate to strong in some localities.

The new snow and wind slabs are lying on a crust on steep sunny slopes.

In shady places that are protected from the wind: Towards its surface, the snowpack is dry and has a loosely bonded surface. The new snow and wind slabs are lying on the unfavourable surface of an old snowpack on steep shady slopes above approximately 2300 m.

In all aspects less snow than usual is lying. Adjacent to ridgelines and in pass areas and at high altitude a little snow is lying. At low altitude less snow than usual is lying. On sunny slopes below approximately 2600 m hardly any snow is lying.

Tendency

The weather conditions will give rise to increasing consolidation of the snowpack.

