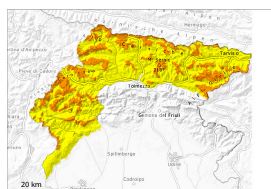


Danger Level 3 - Considerable



Tendency: Constant avalanche danger
on Wednesday 12 03 2025



New snow



Snowpack stability: **poor**

Frequency: **some**

Avalanche size: **large**



Wind slab



Snowpack stability: **poor**

Frequency: **some**

Avalanche size: **large**



Wet snow



Snowpack stability: **fair**

Frequency: **some**

Avalanche size: **medium**

As a consequence of new snow and wind a considerable avalanche danger will prevail.

In particular in the regions exposed to heavier precipitation large to very large avalanches are possible. The avalanche prone locations are to be found in particular at the base of rock walls and behind abrupt changes in the terrain and adjacent to ridgelines and in gullies and bowls. The wind slabs must be evaluated with care and prudence. Avalanches can be released in deep layers of the snowpack. Avalanches can be released by small loads.

Snowpack

As a consequence of new snow and wind, easily released wind slabs formed in all aspects. The wind slabs have bonded poorly with the old snowpack.

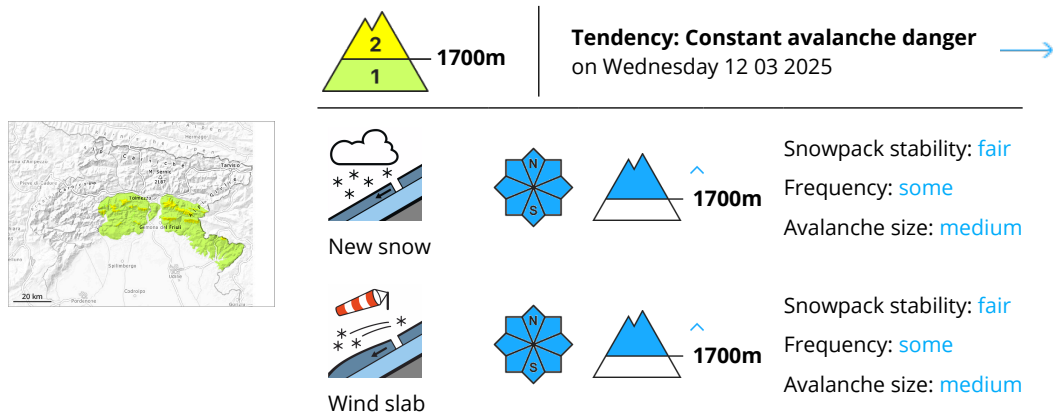
Weak layers exist in the snowpack. The weather conditions will give rise to thorough wetting of the snowpack below approximately 1500 m.

Tendency

Over a wide area precipitation.



Danger Level 2 - Moderate



The new snow and wind slabs represent the main danger.

In all aspects medium-sized and, in isolated cases, large moist avalanches are possible. The avalanche prone locations are to be found in particular at the base of rock walls and behind abrupt changes in the terrain and adjacent to ridgelines and in gullies and bowls. The wind slabs must be evaluated with care and prudence.

Avalanches can be released by large loads.

Snowpack

As a consequence of new snow and wind, easily released wind slabs will form. The wind slabs have bonded poorly with the old snowpack. Weak layers exist in the snowpack.

The weather conditions gave rise to thorough wetting of the snowpack.

Tendency

Over a wide area precipitation.

