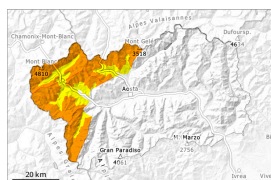


Danger Level 3 - Considerable



Tendency: Constant avalanche danger →

on Thursday 13 03 2025



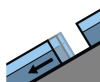
Wind slab



Snowpack stability: **very poor**

Frequency: **some**

Avalanche size: **medium**



Gliding snow



Snowpack stability: **poor**

Frequency: **some**

Avalanche size: **medium**

Fresh wind slabs represent the main danger.

As a consequence of new snow and a moderate to strong southeasterly wind, sometimes easily released wind slabs formed on Monday. In some localities 10 to 25 cm of snow will fall until Wednesday above approximately 1800 m. The avalanche prone locations are sometimes covered with new snow and are therefore difficult to recognise.

The fresh snow and the wind slabs can be released by a single winter sport participant. This applies especially at transitions from a shallow to a deep snowpack, when entering gullies and bowls for example, as well as on very steep shady slopes. Backcountry touring and other off-piste activities call for meticulous route selection.

Several small and medium-sized dry and wet avalanches are possible as the day progresses, in the event of prolonged bright spells in particular on rocky sunny slopes. This applies in particular below approximately 2600 m.

Gliding avalanches are possible. Areas with glide cracks are to be avoided as far as possible.

Snowpack

10 to 15 cm of snow fell on Monday above approximately 2000 m. The wind was moderate to strong in some localities. The new snow of yesterday has settled a little on steep sunny slopes below approximately 2200 m.

10 to 15 cm of snow, and even more in some localities, fell on Tuesday above approximately 1800 m.

The new snow and wind slabs are lying on a crust on steep sunny slopes.

In shady places that are protected from the wind: Towards its surface, the snowpack is dry and has a loosely bonded surface. The new snow and wind slabs are lying on the unfavourable surface of an old snowpack on steep shady slopes above approximately 2300 m. Released avalanches and field observations have confirmed a sometimes treacherous avalanche situation on very steep shady slopes.

In all aspects less snow than usual is lying. On sunny slopes below approximately 2400 m hardly any snow is lying.

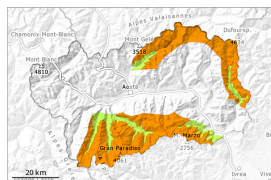
Tendency



The wind will be moderate to strong in some localities. The avalanche danger will increase a little during the day.



Danger Level 3 - Considerable

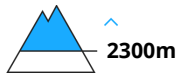


Tendency: Constant avalanche danger →

on Thursday 13 03 2025



Wind slab



Snowpack stability: **very poor**

Frequency: **some**

Avalanche size: **medium**

Fresh wind slabs represent the main danger.

As a consequence of new snow and a moderate to strong southeasterly wind, easily released wind slabs formed on Monday. In some localities 5 to 15 cm of snow will fall until Wednesday above approximately 1800 m. The avalanche prone locations are sometimes covered with new snow and are therefore difficult to recognise.

The fresh snow and the wind slabs can be released easily, even by a single winter sport participant,. This applies especially at transitions from a shallow to a deep snowpack, when entering gullies and bowls for example, as well as on very steep shady slopes. Backcountry touring and other off-piste activities call for meticulous route selection.

Several small and medium-sized dry and wet avalanches are possible as the day progresses, in the event of prolonged bright spells in particular on rocky sunny slopes. This applies in particular below approximately 2600 m.

Snowpack

20 to 30 cm of snow, and even more in some localities, fell on Monday above approximately 2000 m. The wind was moderate to strong in some localities. The new snow of yesterday has settled to a large extent on steep sunny slopes below approximately 2200 m.

5 to 15 cm of snow fell on Tuesday above approximately 1800 m.

The new snow and wind slabs are lying on a crust on steep sunny slopes.

In shady places that are protected from the wind: Towards its surface, the snowpack is dry and has a loosely bonded surface. The new snow and wind slabs are lying on the unfavourable surface of an old snowpack on steep shady slopes above approximately 2300 m. Released avalanches and field observations have confirmed a sometimes treacherous avalanche situation on very steep shady slopes.

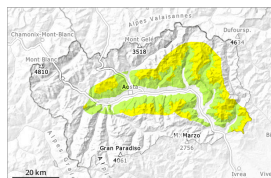
In all aspects less snow than usual is lying. On sunny slopes below approximately 2400 m hardly any snow is lying.

Tendency

The wind will be moderate to strong in some localities. The avalanche danger will persist.



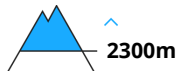
Danger Level 2 - Moderate



Tendency: Constant avalanche danger
on Thursday 13 03 2025



Wind slab



Snowpack stability: **poor**

Frequency: **some**

Avalanche size: **medium**

Fresh wind slabs represent the main danger.

As a consequence of new snow and a moderate to strong southeasterly wind, sometimes avalanche prone wind slabs formed on Monday. In some localities 5 to 10 cm of snow, and even more in some localities, will fall until Wednesday above approximately 1800 m. The avalanche prone locations are sometimes covered with new snow and are therefore difficult to recognise.

The fresh snow and the wind slabs can be released by a single winter sport participant in some cases. This applies especially at transitions from a shallow to a deep snowpack, when entering gullies and bowls for example, as well as on very steep shady slopes.

Several small and, in isolated cases, medium-sized dry and wet avalanches are possible as the day progresses, in the event of prolonged bright spells in particular on rocky sunny slopes. This applies in particular in particular below approximately 2600 m.

Snowpack

10 to 15 cm of snow fell on Monday above approximately 2000 m. The wind was moderate to strong in some localities. The new snow of yesterday has settled a little on steep sunny slopes below approximately 2200 m.

2 to 5 cm of snow, and even more in some localities, fell on Tuesday above approximately 1800 m. The new snow and wind slabs are lying on a crust on steep sunny slopes.

In shady places that are protected from the wind: Towards its surface, the snowpack is dry and has a loosely bonded surface. The new snow and wind slabs are lying on the unfavourable surface of an old snowpack on steep shady slopes above approximately 2300 m.

In all aspects less snow than usual is lying. Adjacent to ridgelines and in pass areas and at high altitude a little snow is lying. At low altitude less snow than usual is lying. On sunny slopes below approximately 2600 m hardly any snow is lying.

Tendency

The wind will be moderate to strong in some localities. The avalanche danger will persist.

