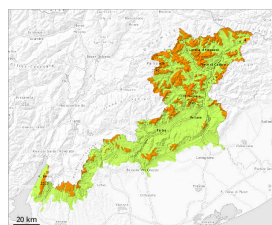


## Danger Level 3 - Considerable



Treeline

**Tendency: Constant avalanche danger** →  
on Thursday 13 03 2025



New snow



Treeline

Snowpack stability: **very poor**Frequency: **some**Avalanche size: **large**

Wind slab



2200m

Snowpack stability: **poor**Frequency: **some**Avalanche size: **large**

As a consequence of new snow and wind a considerable avalanche danger will prevail.

Over a wide area 20 to 30 cm of snow, and even more in some localities, will fall on Wednesday above approximately 2000 m. Strong southwesterly wind above approximately 2000 m. Gradual increase in avalanche danger as a consequence of new snow and wind. Avalanches can occur easily or triggered naturally. This applies even in case of a small load. The avalanche prone locations are to be found in all aspects above approximately 2000 m and in gullies and bowls, and behind abrupt changes in the terrain. In the regions exposed to heavier precipitation caution is to be exercised in particular at the base of rock walls. Wind-loaded slopes where weaknesses exist in the old snowpack are unfavourable. At transitions from a shallow to a deep snowpack, when entering gullies and bowls for example the avalanche prone locations are more prevalent. In the regions exposed to heavier precipitation the avalanche situation is dangerous. Medium-sized and, in isolated cases, large avalanches are possible. The snow sport conditions outside marked and open pistes are dangerous. Careful route selection and spacing between individuals are recommended.

### Snowpack

10 to 15 cm of snow, and even more in some localities, fell on Monday above approximately 1800 m. In particular in shady places that are protected from the wind: Towards its surface, the snowpack is fairly homogeneous and has a loosely bonded surface.

The new snow and wind slabs are lying on the unfavourable surface of an old snowpack on steep shady slopes above approximately 2000 m. Faceted weak layers exist in the bottom section of the snowpack here. On sunny slopes below approximately 2200 m hardly any snow is lying.

### Tendency

In some regions light snowfall to above 1500 m.

