

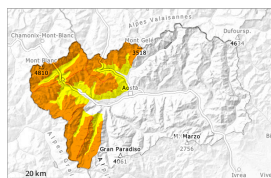
Danger Level 3 - Considerable



2300m

Tendency: Constant avalanche danger →

on Saturday 15 03 2025



Wind slab



2300m

Snowpack stability: **very poor**Frequency: **some**Avalanche size: **medium**Persistent
weak layer

2200m

Snowpack stability: **poor**Frequency: **few**Avalanche size: **medium**

Fresh wind slabs are to be evaluated with care and prudence.

As a consequence of snowfall and the moderate to strong westerly wind, fresh snow drift accumulations formed on Thursday. The fresh snow and in particular the many wind slabs remain for the foreseeable future prone to triggering in particular on very steep northwest, north and northeast facing slopes. In particular above approximately 2300 m the avalanche prone locations are more prevalent. The soft wind slabs are to be assessed with care and prudence. They can be released by a single winter sport participant, in particular at transitions from a shallow to a deep snowpack, when entering gullies and bowls for example.

The avalanche prone locations are sometimes covered with new snow and are therefore difficult to recognise. Whumpfung sounds and the formation of shooting cracks when stepping on the snowpack and released avalanches confirm a sometimes treacherous avalanche situation on very steep shady slopes. Backcountry touring and other off-piste activities call for meticulous route selection.

Several medium-sized dry and moist avalanches are possible as the day progresses, in the event of prolonged bright spells in particular, caution is to be exercised on extremely steep slopes, as well as in steep rocky terrain.

Gliding avalanches are still possible in isolated cases. Areas with glide cracks are to be avoided as far as possible.

Snowpack

25 to 40 cm of snow, and even more in some localities, fell in the last four days above approximately 2000 m. 5 to 10 cm of snow will fall until Friday above approximately 1800 m.

The high humidity gave rise to moistening of the old snowpack in all aspects below approximately 2400 m. The new snow and wind slabs are lying on a crust on steep sunny slopes. In shady places that are protected from the wind above approximately 2500 m: Towards its surface, the snowpack is dry and has a loosely bonded surface. The new snow and wind slabs are lying on the unfavourable surface of an old snowpack on steep shady slopes above approximately 2500 m.



In all aspects less snow than usual is lying. On sunny slopes below approximately 2400 m hardly any snow is lying.

Tendency

Some snow will fall. The avalanche danger will persist.

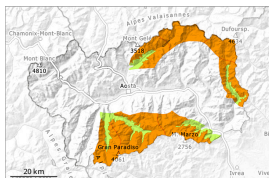


Danger Level 3 - Considerable

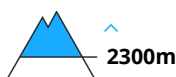


Tendency: Constant avalanche danger →

on Saturday 15 03 2025



Wind slab



Snowpack stability: **very poor**

Frequency: **some**

Avalanche size: **medium**



Persistent weak layer



Snowpack stability: **poor**

Frequency: **some**

Avalanche size: **medium**

Fresh wind slabs represent the main danger.

5 to 15 cm of snow will fall from the afternoon above approximately 1800 m. As a consequence of new snow and a moderate to strong southeasterly wind, sometimes avalanche prone wind slabs formed on Monday. The avalanche prone locations are sometimes covered with new snow and are therefore difficult to recognise. In particular above approximately 2300 m the avalanche prone locations are more prevalent. The fresh snow and the wind slabs can be released easily, even by a single winter sport participant,. This applies especially at transitions from a shallow to a deep snowpack, when entering gullies and bowls for example, as well as on very steep shady slopes. Backcountry touring and other off-piste activities call for meticulous route selection. Whumpfung sounds and the formation of shooting cracks when stepping on the snowpack indicate a sometimes treacherous avalanche situation on very steep shady slopes. Several small and, in isolated cases, medium-sized dry and moist avalanches are possible as the day progresses. This applies in particular on extremely steep slopes below approximately 2500 m, in the event of prolonged bright spells in particular.

Snowpack

25 to 40 cm of snow, and even more in some localities, fell in the last four days above approximately 2000 m. The wind was moderate to strong in some localities.

The high humidity gave rise to moistening of the old snowpack in all aspects below approximately 2400 m. The new snow and wind slabs are lying on a crust on steep sunny slopes. In shady places that are protected from the wind above approximately 2500 m: Towards its surface, the snowpack is dry and has a loosely bonded surface. The new snow and wind slabs are lying on the unfavourable surface of an old snowpack on steep shady slopes above approximately 2400 m.

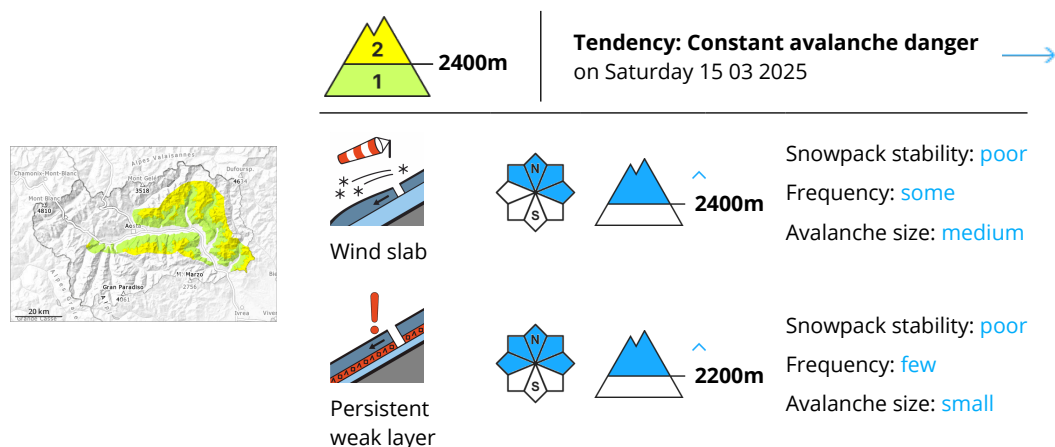
In all aspects less snow than usual is lying. On sunny slopes below approximately 2500 m hardly any snow is lying.

Tendency

Little snow will fall. The avalanche danger will persist.



Danger Level 2 - Moderate



Fresh wind slabs represent the main danger.

As a consequence of a moderate to strong wind from westerly directions, soft wind slabs formed on Thursday. The avalanche prone locations are sometimes covered with new snow and are therefore difficult to recognise.

The fresh snow and the wind slabs can be released by a single winter sport participant in some cases. This applies especially at transitions from a shallow to a deep snowpack, when entering gullies and bowls for example, as well as on very steep shady slopes.

Several small and, in isolated cases, medium-sized dry and moist avalanches are possible, in particular on extremely steep slopes, as well as in steep rocky terrain below approximately 2600 m, in the event of prolonged bright spells in particular.

Snowpack

15 to 25 cm of snow fell in the last four days above approximately 2000 m. The wind was moderate to strong in some localities. 5 to 10 cm of snow will fall on Friday above approximately 1800 m.

The high humidity gave rise to moistening of the old snowpack in all aspects below approximately 2400 m. The new snow and wind slabs are lying on a crust on steep sunny slopes. In shady places that are protected from the wind above approximately 2500 m:

The new snow and wind slabs are lying on the unfavourable surface of an old snowpack on steep shady slopes above approximately 2400 m. Towards its surface, the snowpack is dry and has a loosely bonded surface.

In all aspects less snow than usual is lying. Adjacent to ridgelines and in pass areas and at high altitude a little snow is lying. At low altitude less snow than usual is lying. On sunny slopes below approximately 2600 m hardly any snow is lying.

Tendency

Little snow will fall. The avalanche danger will persist.

