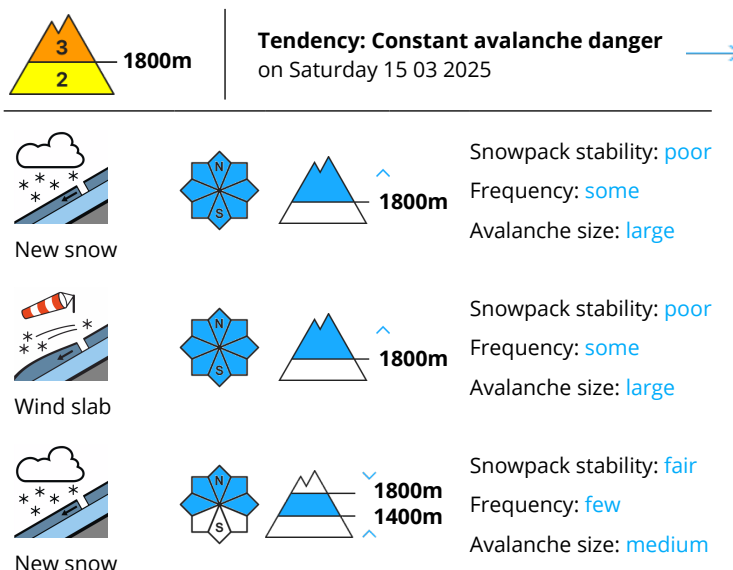


Danger Level 3 - Considerable



New snow and wind slabs represent the main danger.

As a consequence of the sometimes strong wind the wind slabs have increased in size additionally, in particular in gullies and bowls, and behind abrupt changes in the terrain. In starting zones where no previous releases have taken place and on wind-loaded slopes medium-sized and large avalanches are possible as a consequence of new snow and wind.

The new snow and wind slabs can be released easily, even by a single winter sport participant,. Remotely triggered avalanches are possible.

Caution is to be exercised in particular in the regions exposed to heavier precipitation. Isolated very large dry avalanches are possible here. The avalanche prone locations are covered with new snow and are difficult to recognise. Backcountry touring and other off-piste activities call for defensive route selection.

Snowpack

Danger patterns

dp.6: cold, loose snow and wind

dp.1: deep persistent weak layer

Over a wide area over a wide area 30 to 60 cm of snow, but less in some localities, has fallen since Monday above approximately 1700 m. The sometimes strong wind has transported some snow. This situation gave rise to unfavourable bonding of the snowpack over a wide area.

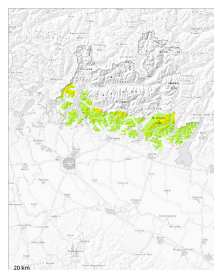
The new snow and wind slabs are prone to triggering. This applies especially at transitions from a shallow to a deep snowpack, when entering gullies and bowls for example.

New snow and wind slabs are lying on a weakly bonded old snowpack, in particular on shady slopes.

Large-grained weak layers exist in the snowpack on shady slopes.



Danger Level 2 - Moderate



Tendency: Constant avalanche danger →
on Saturday 15 03 2025



New snow



Snowpack stability: **fair**

Frequency: **some**

Avalanche size: **medium**



Wind slab



Snowpack stability: **poor**

Frequency: **some**

Avalanche size: **medium**

Dry and moist avalanches are likely to occur.

The new snow and wind slabs can be released naturally in all aspects. In particular on steep slopes and on very steep grassy slopes mostly small moist loose snow avalanches are possible as a consequence of the new snow.

Snowpack

Danger patterns

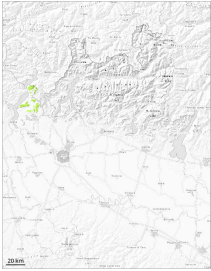
dp.6: cold, loose snow and wind

dp.2: gliding snow

In many cases new snow and wind slabs are lying on a moist old snowpack.



Danger Level 1 - Low



1

Tendency: Constant avalanche danger

on Saturday 15 03 2025

Wet snow

New snow

1200m

1200m

Snowpack stability: fair

Frequency: few

Avalanche size: small

Snowpack stability: fair

Frequency: few

Avalanche size: small

Moist and wet snow slides and small avalanches are possible.

As a consequence of the precipitation individual small moist and wet avalanches are possible.

Snowpack

Danger patterns

dp.2: gliding snow

dp.10: springtime scenario

The snowpack will become in most cases wet all the way through.

