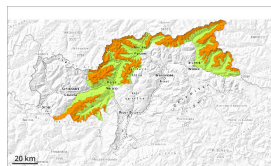


Danger Level 3 - Considerable



Tendency: Constant avalanche danger →

on Saturday 15 03 2025



Wind slab



Snowpack stability: **poor**

Frequency: **many**

Avalanche size: **medium**

Fresh wind slabs at high altitude.

As a consequence of a moderate to strong wind from southwesterly directions, avalanche prone wind slabs will form. Caution is to be exercised in particular on very steep shady slopes adjacent to ridgelines and in gullies and bowls at high altitudes and in high Alpine regions. Mostly the avalanches are medium-sized, especially in the regions exposed to heavier precipitation. Individual medium-sized natural avalanches are possible.

Individual dry loose snow avalanches are possible. In the event of prolonged bright spells this applies on extremely steep slopes, especially in the regions exposed to heavier precipitation. Mostly the avalanches are small.

On steep grassy slopes individual small and, in isolated cases, medium-sized gliding avalanches are possible.

Weak layers in the old snowpack can be released in very isolated cases. The avalanche prone locations are to be found in particular on extremely steep shady slopes above approximately 2400 m. Avalanches can reach medium size in isolated cases.

Snowpack

Danger patterns

dp.6: cold, loose snow and wind

10 to 40 cm of snow, and even more in some localities, has fallen since Wednesday. 10 to 20 cm of snow, and even more in some localities, will fall on Friday. This applies at high altitudes and in high Alpine regions. The wind will transport the new snow. The fresh wind slabs are lying on soft layers on shady slopes at elevated altitudes.

Faceted weak layers exist in the bottom section of the snowpack on west, north and east facing slopes. The old snowpack will be moist at low and intermediate altitudes.

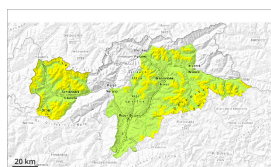
Only a small amount of snow is lying for the time of year.

Tendency

Fresh wind slabs represent the main danger. Up to 10 cm of snow, and even more in some localities, will fall.



Danger Level 2 - Moderate



Tendency: Constant avalanche danger →

on Saturday 15 03 2025



Wind slab



Snowpack stability: **poor**

Frequency: **some**

Avalanche size: **medium**

Fresh wind slabs at high altitude.

In the regions neighbouring those that are subject to danger level 3 (considerable) the avalanche danger is higher.

As a consequence of a moderate to strong wind from southwesterly directions, avalanche prone wind slabs will form. Caution is to be exercised in particular on very steep shady slopes adjacent to ridgelines and in gullies and bowls at high altitudes and in high Alpine regions. Avalanches can reach medium size in isolated cases, especially in the regions exposed to heavier precipitation. On shady slopes individual natural avalanches are possible.

Individual dry loose snow avalanches are possible. In the event of prolonged bright spells this applies on extremely steep slopes, especially in the regions exposed to heavier precipitation. Mostly the avalanches are small.

On steep grassy slopes individual small and, in isolated cases, medium-sized gliding avalanches are possible.

Weak layers in the old snowpack can be released in very isolated cases. The avalanche prone locations are to be found in particular on extremely steep shady slopes above approximately 2400 m. Avalanches can reach medium size in isolated cases.

Snowpack

Danger patterns

dp.6: cold, loose snow and wind

10 to 20 cm of snow, and even more in some localities, has fallen since Wednesday. 10 to 20 cm of snow, and even more in some localities, will fall on Friday. This applies at high altitudes and in high Alpine regions. The wind will transport the new snow. The fresh wind slabs are lying on soft layers on shady slopes at elevated altitudes.

Faceted weak layers exist in the bottom section of the snowpack on west, north and east facing slopes. The old snowpack will be moist at low and intermediate altitudes.

Only a small amount of snow is lying for the time of year.

Tendency



Fresh wind slabs represent the main danger. Some snow will fall.

